

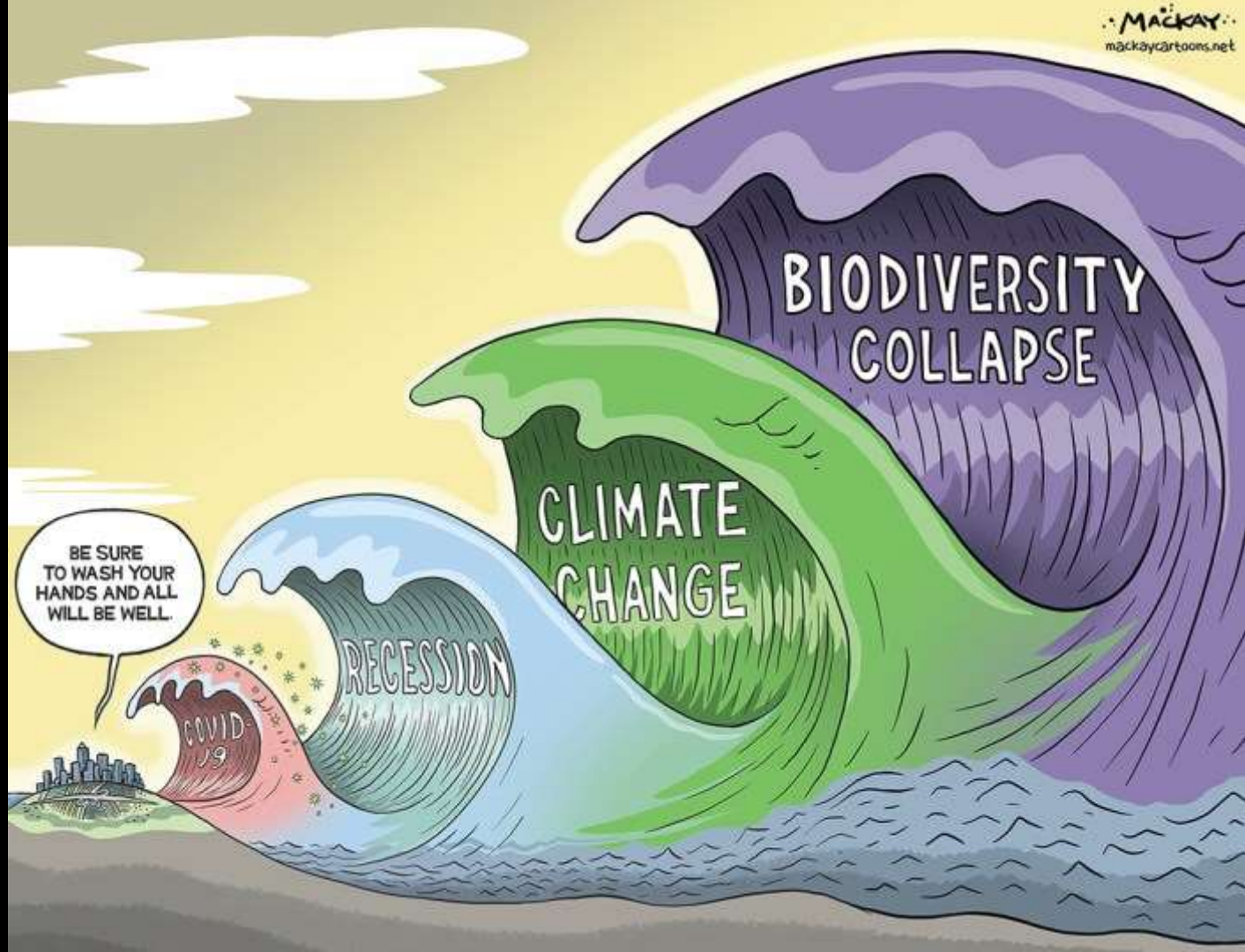


Adrian Bertrand
Co-founder



DATE
15-16
SEP 2022

**GEPF ANNUAL
THOUGHT LEADERSHIP
CONFERENCE
2022**



BE SURE
TO WASH YOUR
HANDS AND ALL
WILL BE WELL.

COVID-19

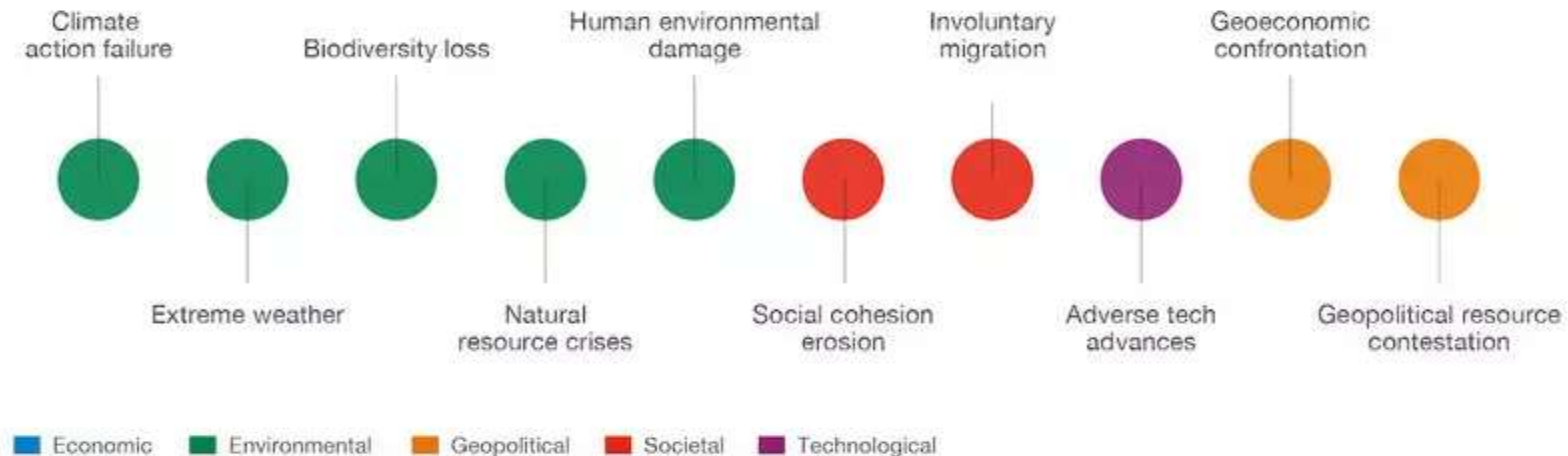
RECESSION

CLIMATE
CHANGE

BIODIVERSITY
COLLAPSE

Top Long-Term Global Risks

Over the next 5-10 years



Source: World Economic Forum Global Risks Report 2022



CLIMATE RISKS: 1.5°C VS 2°C GLOBAL WARMING

EXTREME WEATHER

100% increase in flood risk. vs 170% increase in flood risk.

SPECIES

5% of insects, 8% of plants and 4% of vertebrates will be affected. vs 18% of insects, 16% of plants and 8% of vertebrates will be affected.

WATER AVAILABILITY

350 million urban residents exposed to severe drought by 2100. vs 410 million urban residents exposed to severe drought by 2100.

ARCTIC SEA ICE

Ice-free summers in the Arctic at least once every 100 years. vs Ice-free summers in the Arctic at least once every 10 years.

PEOPLE

9% of the world's population (700 million people) will be exposed to extreme heat waves at least once every 20 years. vs 28% of the world's population (2 billion people) will be exposed to extreme heat waves at least once every 20 years.

SEA-LEVEL RISE

46 million people impacted by sea-level rise of 48cm by 2100. vs 49 million people impacted by sea-level rise of 56cm by 2100.

COSTS

Lower economic growth at 2°C than at 1.5°C for many countries, particularly low-income countries.

OCEANS

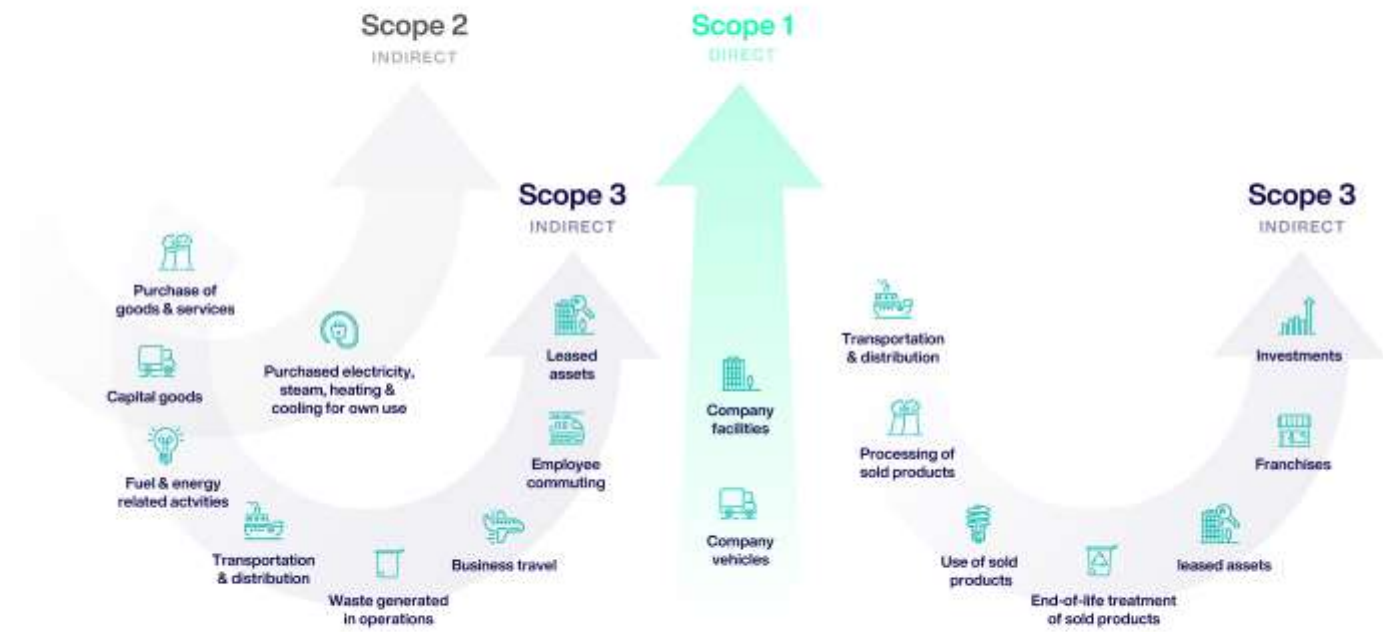
Lower risks to marine biodiversity, ecosystems and their ecological functions and services at 1.5°C compared to 2°C.

CORAL BLEACHING

70% of world's coral reefs are lost by 2100. vs Virtually all coral reefs are lost by 2100.

FOOD

Every half degree warming will consistently lead to lower yields and lower nutritional content in tropical regions.



Materiality



Source: European Commission. [New Guidelines on Reporting Climate-related Information Summary](#).



**WE DEMAND A
RENEWABLE ENERGY SECTOR
OWNED BY THE
WORKING
CLASS**

**BAN
IPP'S**

**ESKOM
MUST
REMAIN UNDER
THE OWNERSHIP
OF THE STATE NO
PRIVATISATION**

**WE DEMAND
REPRESENTATION
IN THE ESKOM
BOARD FOR
WORKERS AND
COMMUNITY
REPRESENTATIVES**



Contacts:

(e) info@sixcapitals.co.za

(t) [+27 \(0\) 21 851 0091](tel:+27218510091)